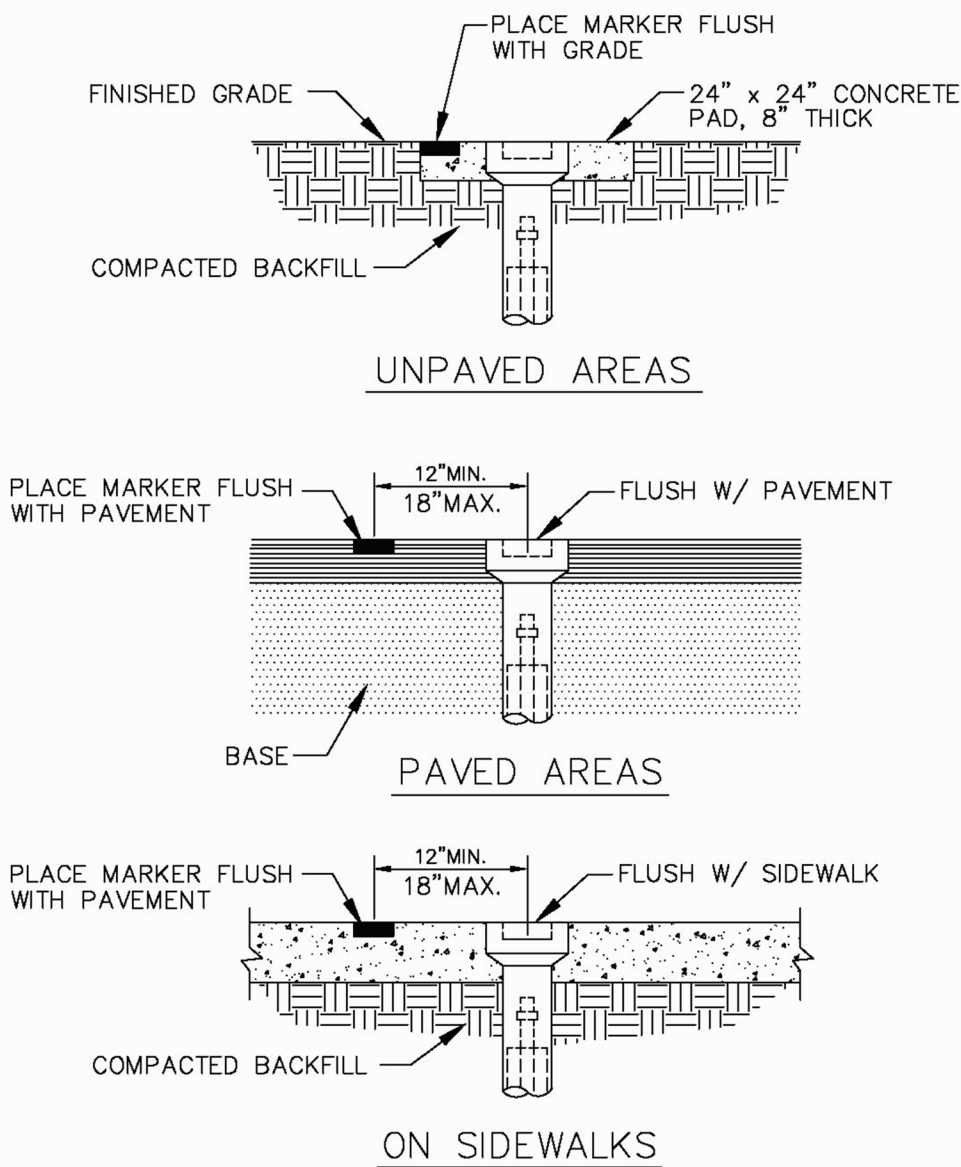
**SAMPLE POINT (HYDRANT)**

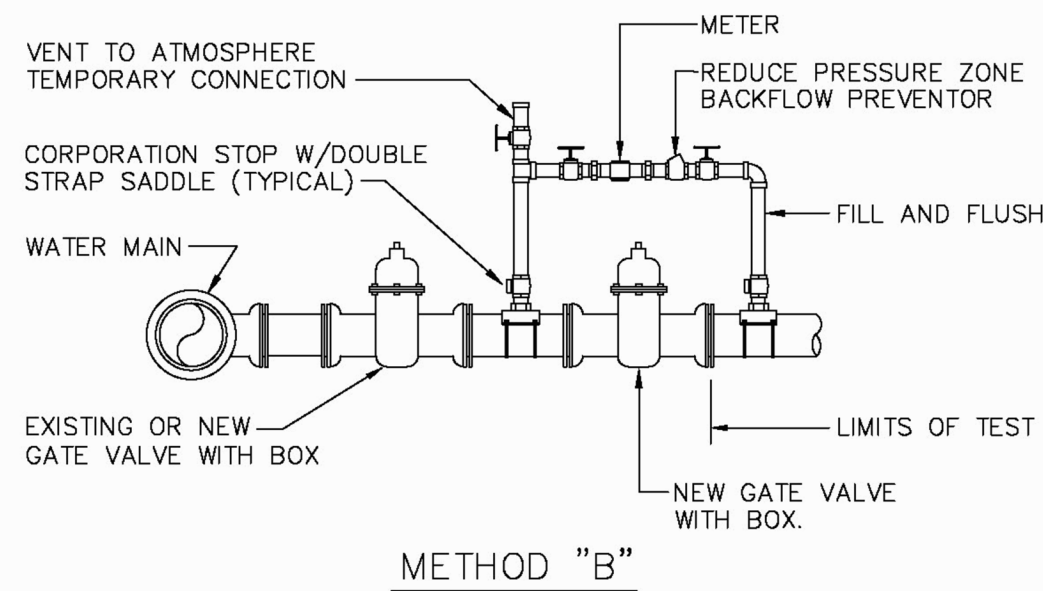
ALL POMPANO BEACH HYDRANTS SHALL BE PAINTED RED.

ALL D.I.P. TO BE PAINTED
BLUE ON TOP HALF OF PIPE.

ENGINEERING STANDARDS 2025			SAMPLE POINT (HYDRANT)	
REVISIONS	BY	DATE	ENGINEERING DIVISION CITY OF POMPANO BEACH	DATE: MAY 2022 DWG. NO. 101-1
	S.S.	04-2005		
			SCALE: N.T.S.	

**VALVE BOX SETTINGS**

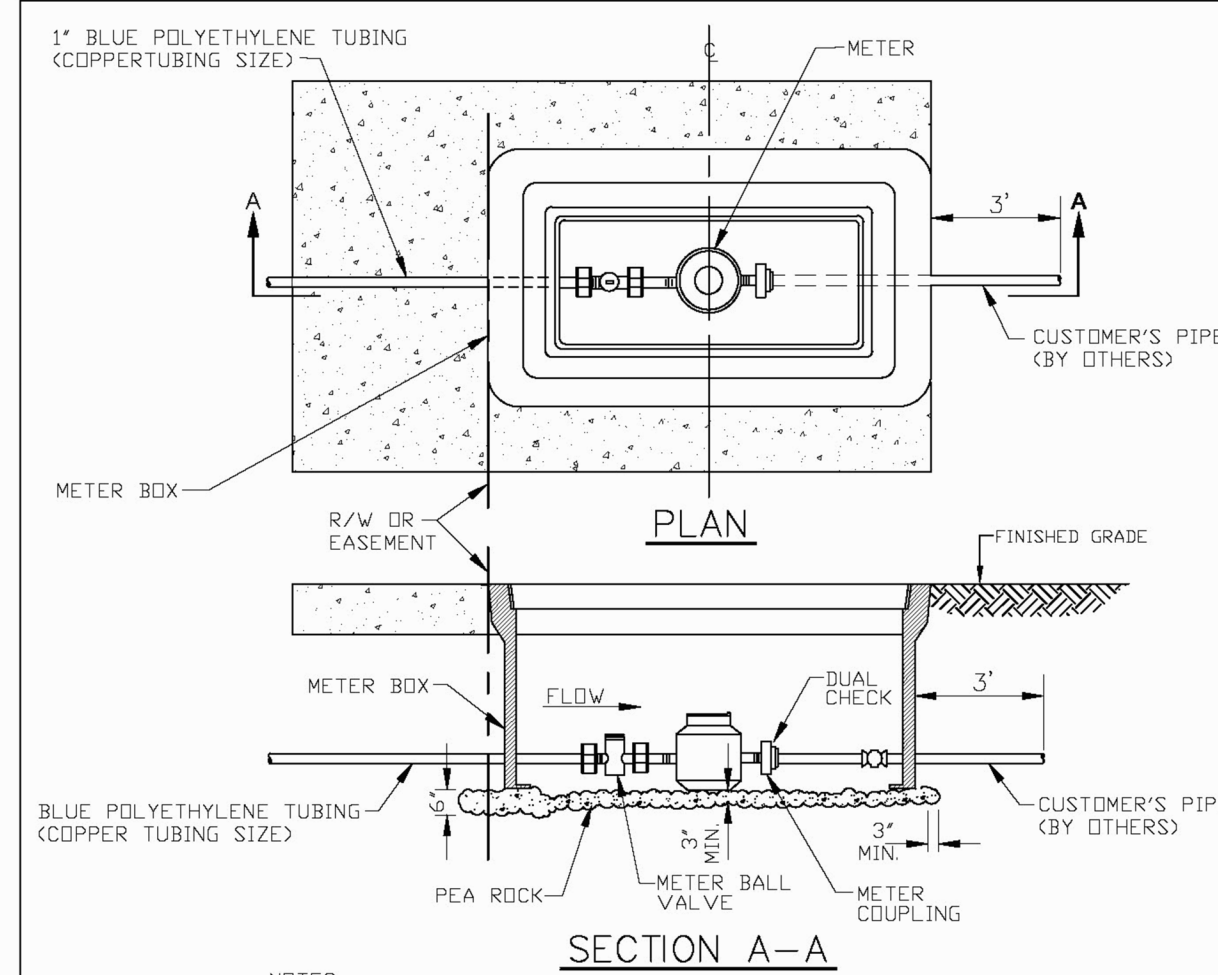
ENGINEERING STANDARDS 2025			VALVE BOX SETTINGS	
REVISIONS	BY	DATE	ENGINEERING DIVISION CITY OF POMPANO BEACH	DATE: MAY 2022 DWG. NO. 102-1
	S.S.	04-2005		
			SCALE: N.T.S.	

**NOTES:**

1. WATER MAIN TO BE PRESSURE TESTED AND DISINFECTED ACCORDING TO BROWARD COUNTY PUBLIC HEALTH UNIT REGULATIONS, AWWA, AND MUNICIPAL SPECIFICATIONS IN EFFECT.
2. BACTERIOLOGICAL TESTS ARE TO BE PERFORMED BY THE CONTRACTOR AND AN APPROVED TESTING LABORATORY.
3. REMOVE TEMPORARY CONNECTION AT SADDLE ON NEW MAINS AFTER FILLING AND FLUSHING HAS BEEN COMPLETED AND REPLACE WITH BRASS PLUG
4. PROVIDE ALL NECESSARY THRUST BLOCKS OR OTHER RESTRAINTS.
5. FILLING AND FLUSHING LOCATIONS SHALL BE COORDINATED BY THE CONTRACTOR, ENGINEER, AND CITY
6. VENT TO ATMOSPHERE SHALL REMAIN OPEN DURING ALL PHASES OF PRESSURE TESTING.
7. AFTER COMPLETION FILL AND FLUSH CONNECTION
8. USE MEGALUGS AT ALL PIPE JOINTS

FILLING AND FLUSHING CONNECTIONALL D.I.P. TO BE PAINTED
BLUE ON TOP HALF OF PIPE.

ENGINEERING STANDARDS 2025			FILLING / FLUSHING CONNECTION	
REVISIONS	BY	DATE	ENGINEERING DIVISION CITY OF POMPANO BEACH	DATE: MAY 2022 DWG. NO. 104-1
	S.S.	04-2005		
	T.W.	11-2007		
	S.S.	01-2012	SCALE: N.T.S.	

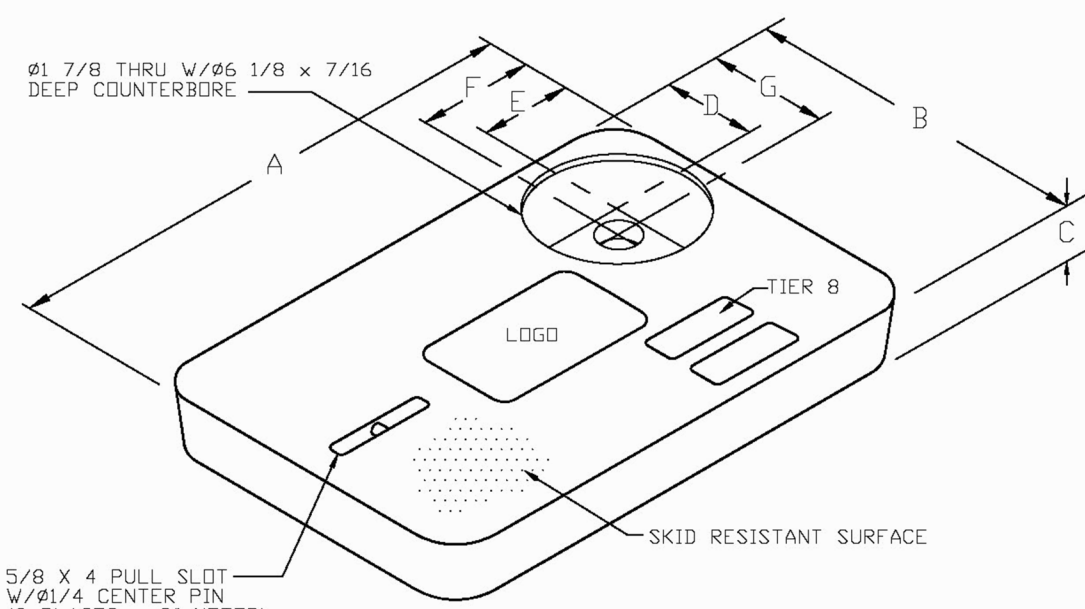
**NOTES:**

1. ALL METERS WILL BE SUPPLIED AND INSTALLED BY COPB UTILITIES. METER HAS IRON PIPE THREAD MALE CONNECTION ON EACH END.
2. METER SHALL BE CENTERED IN BOX.
3. DUAL CHECK IS SAME SIZE AS CUSTOMER'S SERVICE LINE.

METER SIZE	LAYING LENGTH (IN)	HEIGHT (IN)
3/4"	7.5	4.56
1"	10.75	5.75

METER BOX INSTALLATION

ENGINEERING STANDARDS 2025			METER BOX INSTALLATION FOR 5/8" AND 1" METERS	
REVISIONS	BY	DATE	ENGINEERING DIVISION CITY OF POMPANO BEACH	DATE: JAN. 2022 DWG. NO. 105-2
	S.S.	11-2012		
			SCALE: N.T.S.	



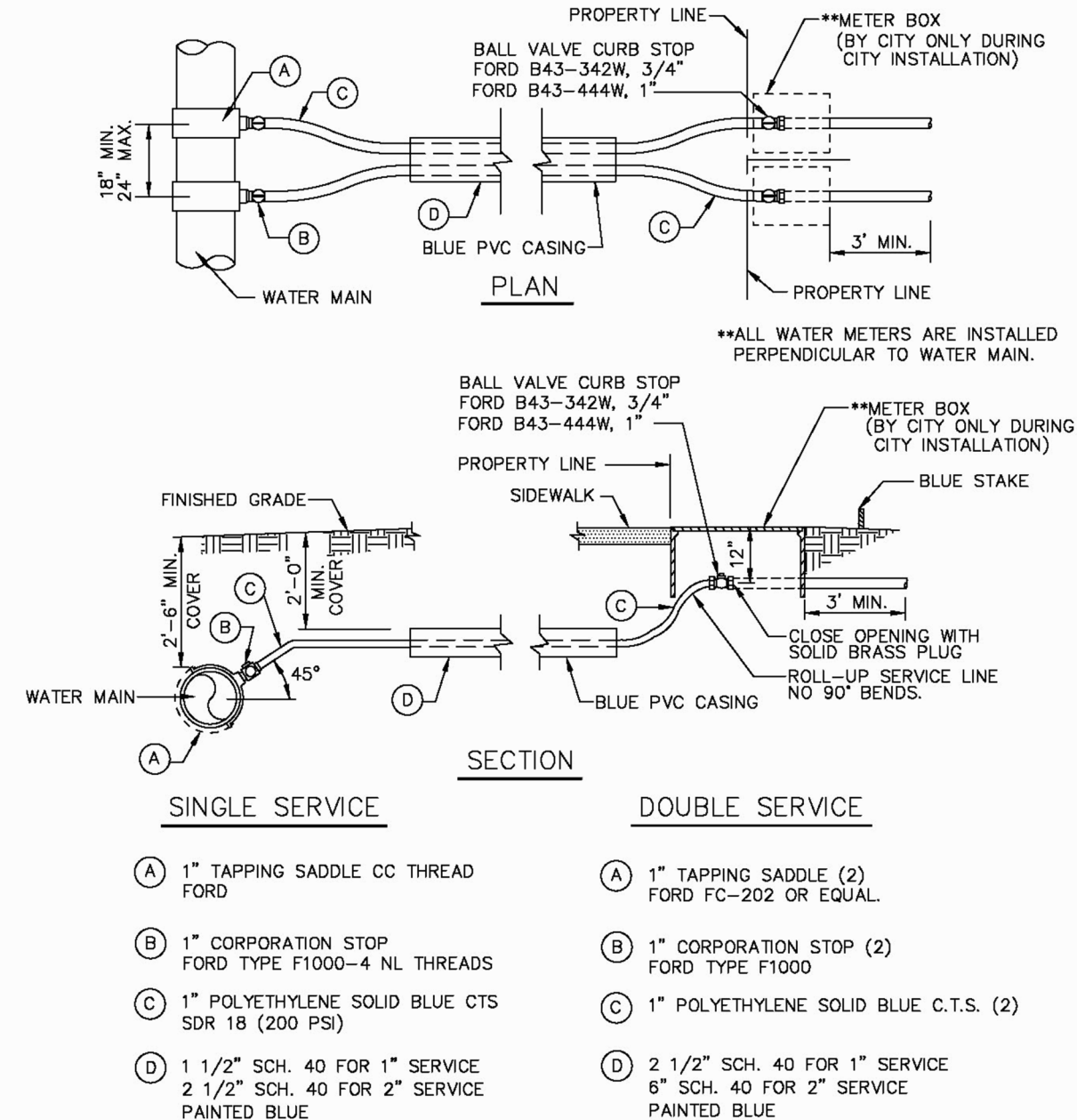
METER BOX COVER DIMENSIONS (IN)							
METER SIZE	A	B	C	D	E	F	G
1"	19 1/8"	11 1/4"	1 3/4"	3 3/4"	4"	4 9/16"	4 5/16"
1 1/2"	23 1/4"	13 3/4"	2"	4"	4"	4 9/16"	4 9/16"
2"	30 1/2"	17 1/2"	2"	4"	4"	4 9/16"	4 9/16"

NOTES

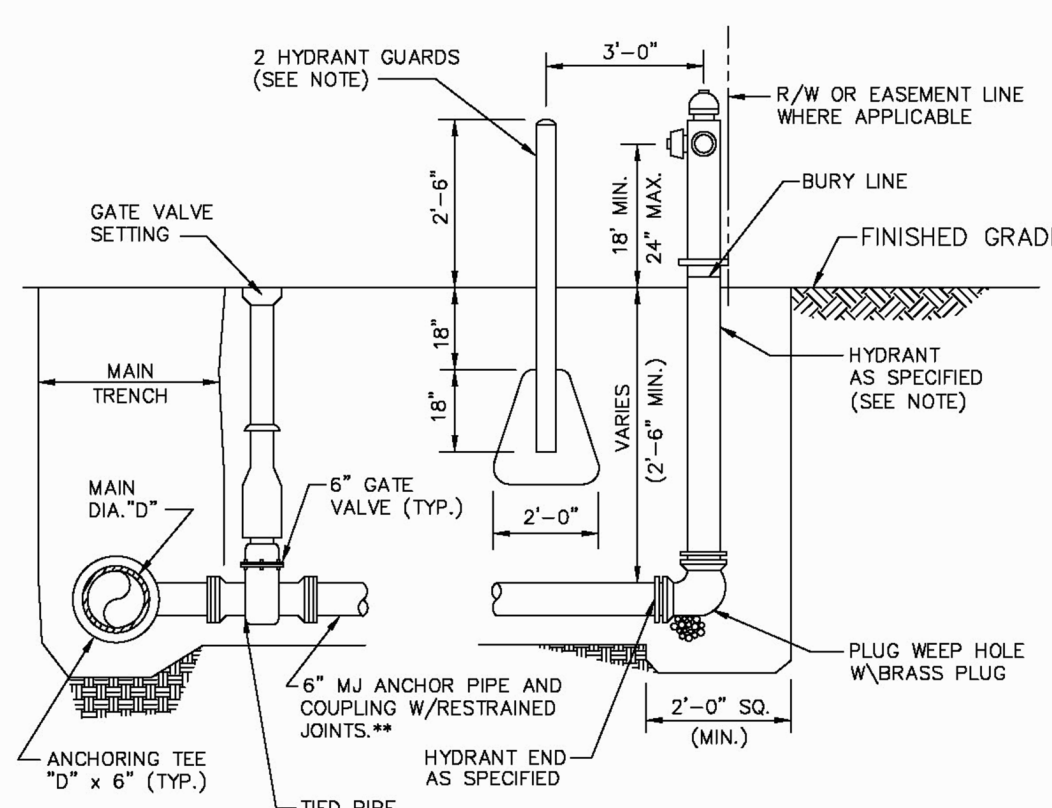
1. CUSTOMER IS CITY OF POMPANO BEACH FLORIDA. LOGO TO BE SPECIFIED. CITY OF POMPANO BEACH POTABLE WATER
2. FITS NEPTUNE R450 ANTENNA
3. THIS COVER IS RATED FOR A STATIC DESIGN LOAD OF 8,000 LBS. (35,548 N) OVER A 10 (254) X 10 (254) AREA AND MUST PASS A MINIMUM STATIC TEST LOAD OF 12,000 LBS (53,376 N).
4. METER BOX COVER SHOULD BE RATED FOR TRAFFIC CONDITION AS DETERMINED BY ENGINEER OF RECORD.

POTABLE WATER METER BOX COVER

ENGINEERING STANDARDS 2025			TYPICAL METER BOX COVER	
REVISIONS	BY	DATE	ENGINEERING DIVISION CITY OF POMPANO BEACH	DATE: JAN. 2022 DWG. NO. 105-3
	S.S.	11-2012		
			SCALE: N.T.S.	

**TYPICAL 3/4" AND 1" WATER SERVICE**

ENGINEERING STANDARDS 2025			TYPICAL 1" WATER SERVICE	
REVISIONS	BY	DATE	ENGINEERING DIVISION CITY OF POMPANO BEACH	DATE: MAY 2022 DWG. NO. 107-1
	S.S.	11-2007		
	S.S.	05-2012		
	S.S.	11-2015	SCALE: N.T.S.	
	A.S.	08-2021		

**NOTES**

HYDRANT GUARDS TO BE 6" DIAMETER GALVANIZED STEEL PIPE PAINTED YELLOW FILLED WITH CONCRETE. OMIT GUARDS IN LOCATIONS WHERE SIDEWALKS EXIST.

**USE 2-3/4" S.S. TIE RODS WHEN DISTANCE BETWEEN MAIN AND HYDRANT < 10'. TIE RODS WILL BE USED W/RESTRAINED JOINTS OR USE MEGALUGS AT ALL PIPE JOINTS

HYDRANTS INSTALLED ON EXISTING WATER MAINS MUST USE A MUELLER MJ DI TAPPING SLEEVE, H-615 OR APPROVED EQUAL.

HYDRANTS CONNECTED TO NEW MAINS SHALL BE CONNECTED USING A HYDRANT TEE.

ALL POMPANO BEACH HYDRANTS SHALL BE PAINTED RED.

TYPICAL FIRE HYDRANT ASSEMBLY

ENGINEERING STANDARDS 2025			FIRE HYDRANT ASSEMBLY	
REVISIONS	BY	DATE	ENGINEERING DIVISION CITY OF POMPANO BEACH	DATE: MAY 2022 DWG. NO. 109-1
	S.S.	11-2012		
	T.W.	10-2010		
	S.S.	2-2012	SCALE: N.T.S.	
	S.S.	11-2012		

Regina Bobo-Jackson, State of Florida, Professional Engineer, License No. 38550

This item has been digitally signed and sealed by Regina Bobo-Jackson, P.E. on the date adjacent to the seal.

Printed copies of this document are not considered signed and sealed and the signature must be verified on any electronic copies.

REVISIONS	DESCRIPTION
NO.	DATE

GEA PROJECT NO. : 23010
DATE : 11-12-23
SCALE : AS SHOWN
DESIGNED BY : R.B.J.
DRAWN BY : C.P.R.
CHECKED BY : R.B.J.
APPROVED BY : R.B.J.

SHEET TITLE

**WATER
DETAILS**